

Bass

Floral Fury

from Cuphead

Composed by Kris Maddigan

Transcribed by Tristan H

Samba ♩ = 150

N.C.



Melody and drums only



Play 8x [A] N.C.



Drum break

Unison

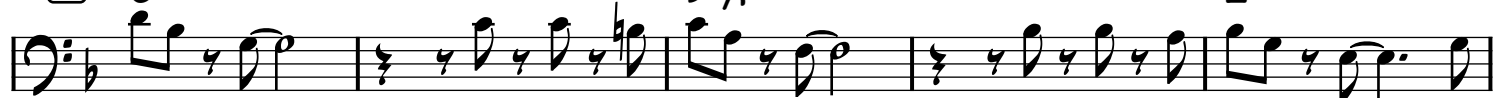


[B]

G-

D-/F

E°7



(E°7)

D-

G-



D-/F

E°7

N.C.



C N.C./G /F /E /C# /D

Unison

/G /F /E /C# /D (D-)

(1x only)

D G- D- A7 D-

Solos

G- D- A7 D- Eb°7

Bb F E°7 D-

G- D- A7 D- To Coda last x

E N.C./G /F /E /C# /D

Unison

/G /F /E /C# /D

/G /F /E /C# /D

/G /F /E /C# /D

F G- D-/F

A7b9 D- D-

1. 2.

D.S. al Coda

D- **G** N.C.

Melody and drums only

H Play 16x **I** G- D-/F

Drum break

A7b9 D- D-

1. 2.

J N.C./G /F /E /C# /D

Unison

/G /F /E /C# /D N.C. G-

1. 2.